



Galeco STAL² gutter system



Galeco STAL² gutter system

Galeco STAL² is a gutter system designed to provide modern and aesthetic solutions which harmonise perfectly with the structure of the building.

The new Galeco STAL² square gutter system enables an optional fascia and soffit cover to be fitted, which is snapped into the lower section of the metal support brackets. Such a solution allows the front part of the gutter to be covered and the underside of the eaves to be finished with a Galeco DECOR decorative roof soffit, thus giving a smooth finish effect to the eaves and hiding all fixing brackets.

The square profile rainwater pipes form an additional aesthetic component, perfectly complementing the whole facade of the modern building.



Advantages



Aesthetic finish

The geometric shape of the gutter and downpipe and the use of a decorative soffit facilitates a modern appearance to the building's structure.



Quick assembly and disassembly

Allows easy access to the gutter for cleaning the system at any time.



Square profile of the gutter and downpipe

The shape is optimally adapted to the building's elevation, and additionally provides greater system efficiency.

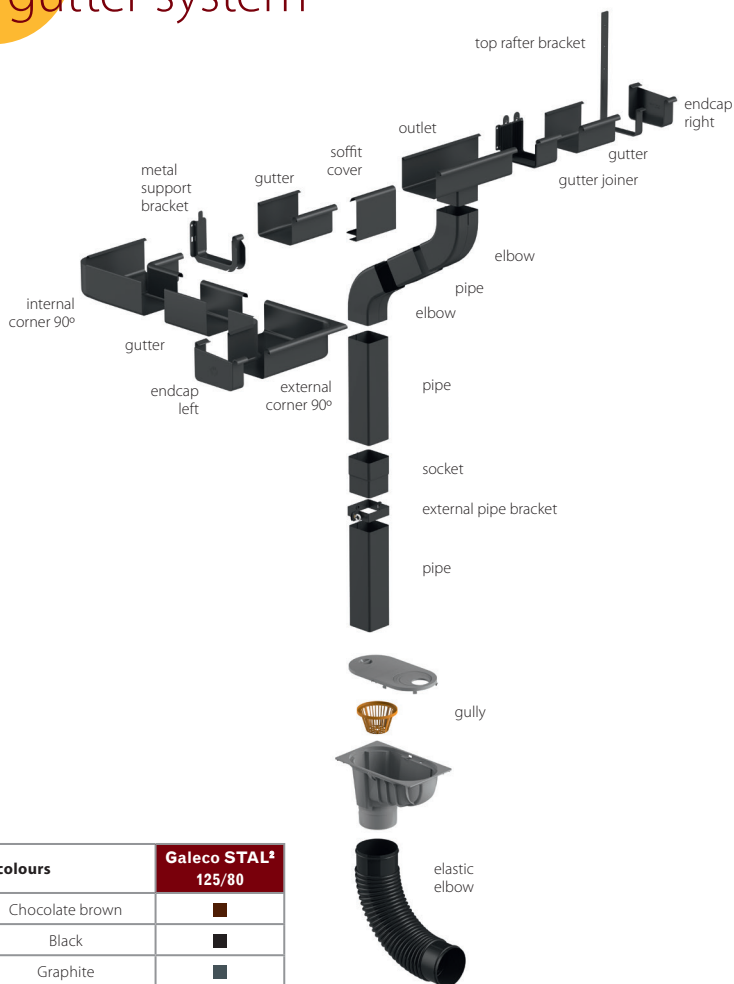


Support for architects in the form of a CAD database




A specially prepared CAD drawings will allow architects and designers to specify the system in the building design.




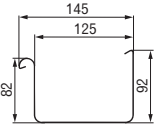
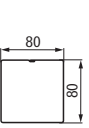
Galeco STAL² gutter system



Colours

Available colours			Galeco STAL ² 125/80
~ RAL 8017	E	Chocolate brown	
~ RAL 9005	B	Black	
~ RAL 7015	A	Graphite	

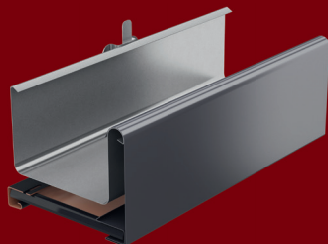
Diameters and application

	 <p>Surface area: 100 cm²</p>	<p>Galeco STAL² 125/80 gutter system is designed for use in single-family homes, apartment buildings and small industrial facilities.</p>
	 <p>Surface area: 62 cm²</p>	



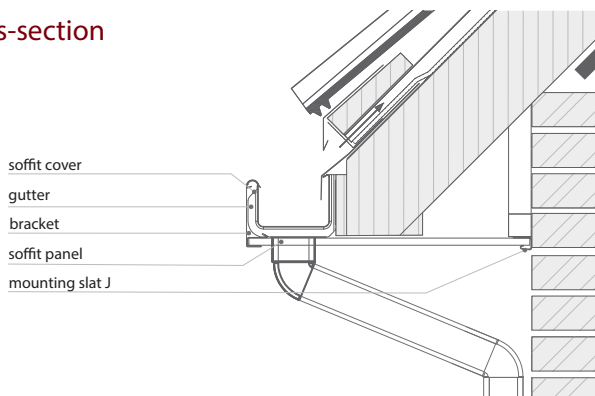
Dedicated Soffit Cover

This cover is a type of flashing that is used to cover the entire gutter system by cleverly snapping it into place onto the front of the metal support brackets.



The lower part of the cover has been contoured to fit the shape of the J mounting slat, available in the Galeco DECOR soffit system, thus making it very easy to slide the soffit panel on and add an aesthetic touch to the eaves. Once the rainwater downpipe is passed through the soffit panel, all remaining components of the downpipe are installed in the same manner as any other gutter system.

Installation cross-section



Galeco Sp. z o.o., ul. Uśmiechu 1, 32-083 Balice
www.galeco.pl, www.galeco.info, e-mail: export@galeco.eu
 helpline: **801 623 626*** The cost of the call is the same as for a local call



Polish idea
 Polish manufacturer
 Polish labor



This leaflet is not to be considered a trade offer within the meaning of the trade law.
 Actual product colour may differ from the colours in this leaflet.



Trust safe solutions.

distributor's stamp